

Hitchin

40% £128,000

Allwoods Place, Hertfordshire



Stunning ground floor spacious 2 bedroom apartment with a patio area, landscaped communal gardens and parking. Offers spacious open planned living and positioned in the picturesque market town of Hitchin, within walking distance of Hitchin train station into London Cambridge and Peterborough via direct rail links and the A1, also within walking distance of the town centre, enjoying the perfect work life balance.

Key Features :

- 2 double bedrooms
- Main bedroom with en-suite
- Ceramic floor tiles in kitchen and bathroom
- Gas central heating and combi boiler
- Shower thermostat
- Fully fitted kitchen with integrated fridge/ freezer, dishwasher, oven extractor fan
- 1 Car parking space and visitors car parking spaces
- Patio area
- Utility cupboard with a washer/dryer installed
- Large full length windows



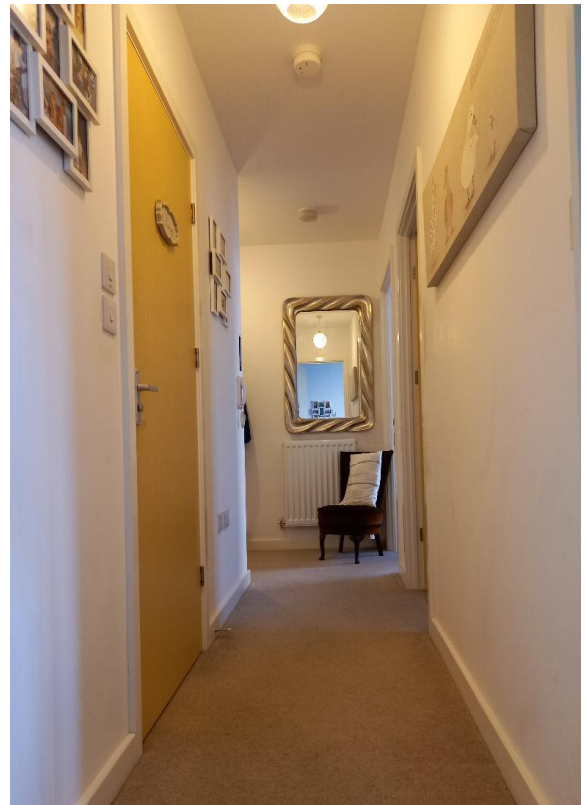
Outside



Patio Area



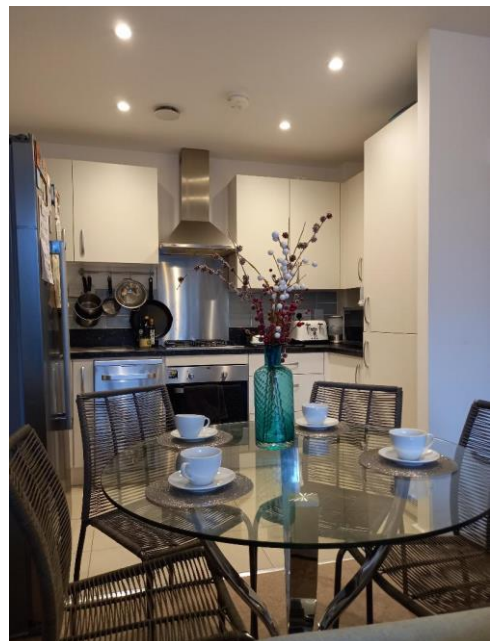
Lounge area



Hallway



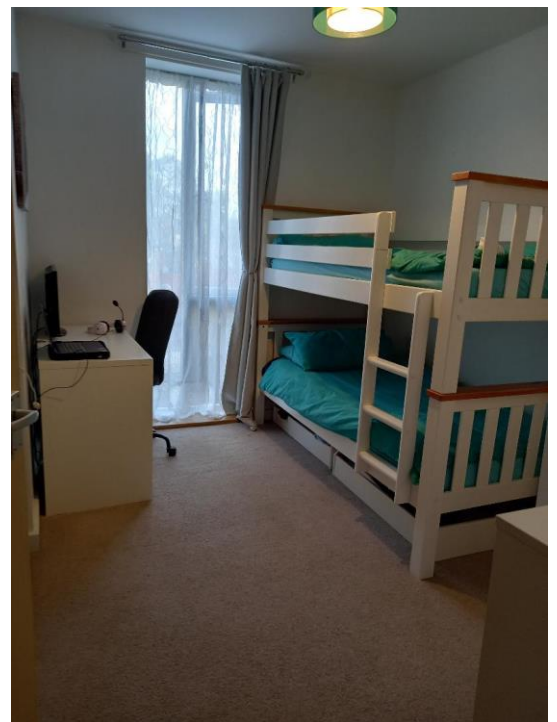
Kitchen Area





Bedroom 1 with en-suite

2nd Bedroom



Property Details

Communal Gardens

Landscape communal gardens with various trees and shrubs

Entrance porch

Communal entrance entry phone and buzzer system. Stairs to all floors

Entrance Hall

Door leading to all accommodation, a radiator and a large built in utility cupboard with plumbing for combi boiler and washer dryer

Open Plan Kitchen/Living /Dining Area 21'7" x 11'7" (6.64m x 3.58m)

Kitchen Area - fully fitted kitchen with a range of wall and base units, stainless steel sink and drainer with mixer taps and worktops. Integrated fan oven, gas hobs with extractor fan and cooker hood, integrated full length fridge freezer, and dishwasher

Lounge- Double glazed patio doors leading to patio area. Telephone , tv point and radiator.

Bedroom 1 11'3 "x 11'1 "(3.46m x 3.39m)

Double glazed full length window, tv point and telephone points radiator and double fitted wardrobes, bedroom leading to en-suite.

En-suite

A full length shower and Roca toilet and wash hand basin with mixer taps and underneath storage. Heated towel rail and extractor fan. Added feature - a wall fitted mirror and extractor fan.

Bedroom 2 11'3" x 9'6" (3.46m x 2.94m)

Double glazed full length window, tv point radiator and double fitted wardrobes.

Bathroom

Roca Wash hand basin with mixer tap, bath with mixer taps and shower attachment over, Heated towel rail and extractor fan. Added feature - a wall fitted mirror



Plot 68, 72 and 76 are handed



For more information

These particulars do not constitute any part of an offer or contract. Any